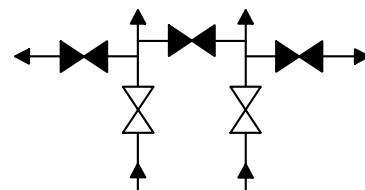
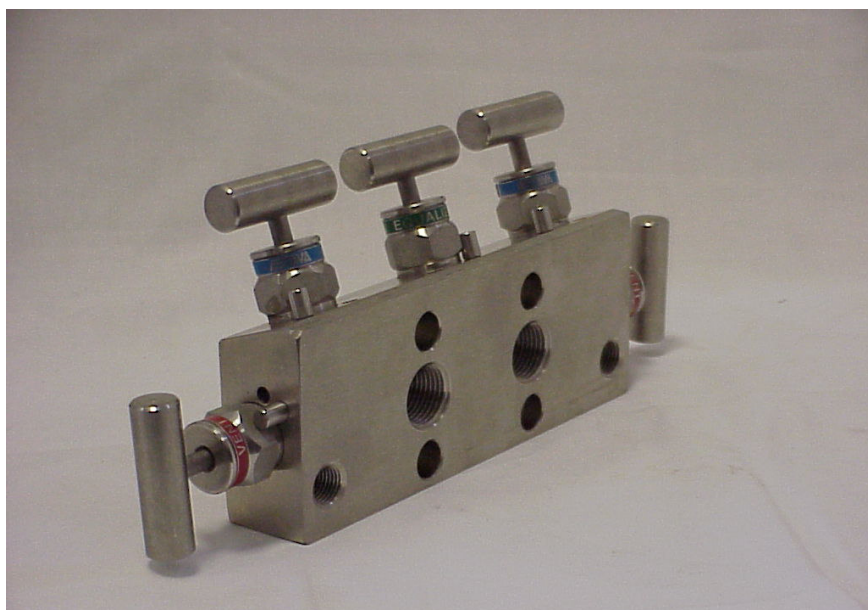




# Model 512

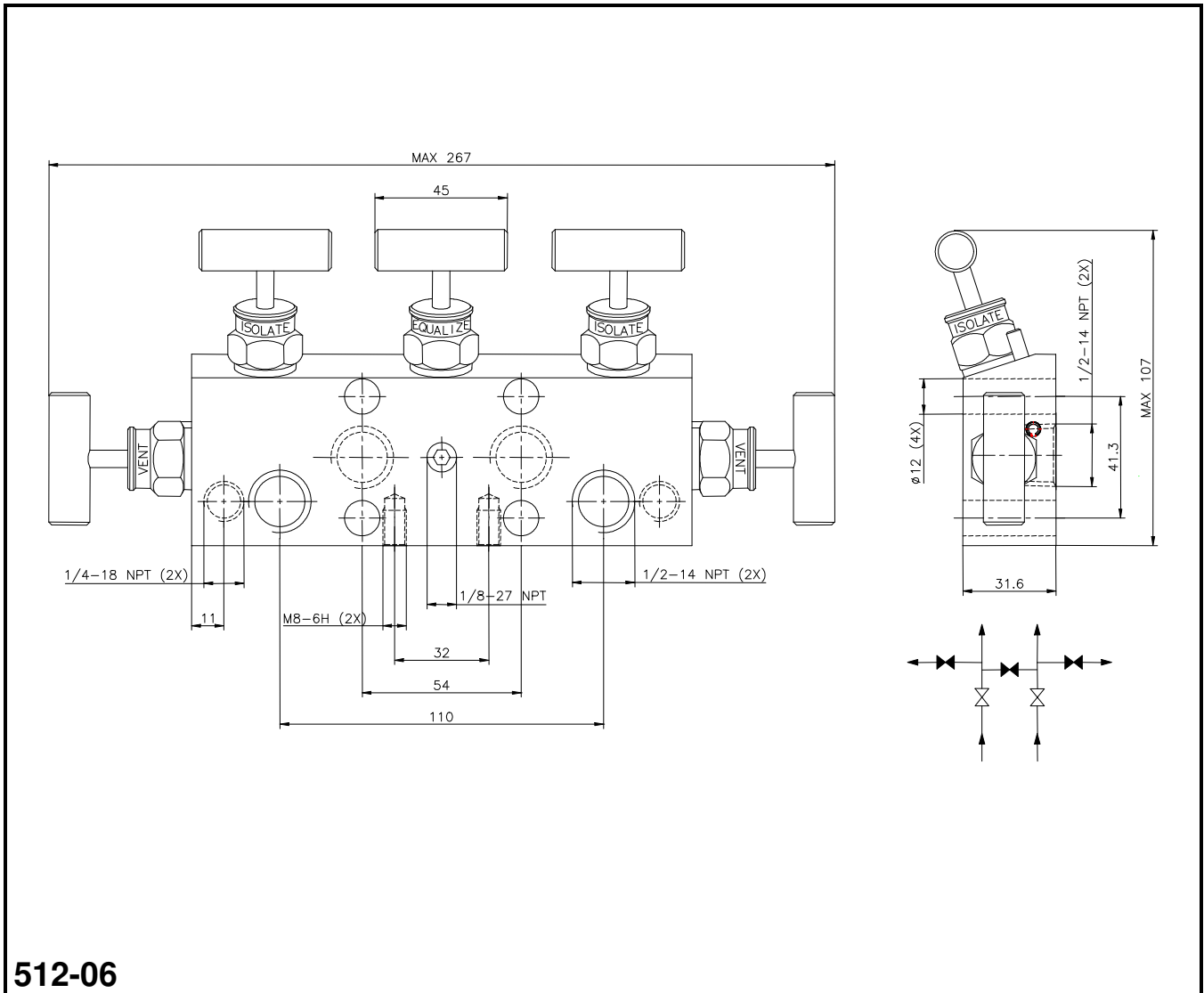


## Picture model: 512-06

### 5-VALVE MANIFOLD FOR REMOTE MOUNTING ON DIFFERENTIAL PRESSURE TRANSMITTER

<b>Standard materials</b>				
Body, Bonnet	AISI 316 L			
Needle point	Rotating ceramic ball Al <sub>2</sub> O <sub>3</sub>			
Stem	AISI 316 Ti with chromium-carbide diffusion coating			
<b>Connections</b>				
Process	2 x 1/2-14 NPT (F)	ANSI / ASME B1.20.1		
Instrument	2 x 1/2-14 NPT (F)	ANSI / ASME B1.20.1		
Vent / Purge	2 x 1/4-18 NPT (F)	ANSI / ASME B1.20.1		
<b>Stem packing</b>	<b>Code</b>	<b>P/T</b>		<b>Material</b>
Teflon (PTFE)	xxx-01	413 barg 38 °C 6000 psig 100 °F	200 barg 230 °C 3000 psig 450 °F	AISI 316 (L)
VITON	xxx-06	600 barg 38 °C 9000 psig 100 °F	200 barg 200 °C 3000 psig 400 °F	AISI 316 (L)
Grafoil	xxx-05	413 barg 38 °C 6000 psig 100 °F	200 barg 400 °C 3000 psig 750 °F	AISI 316 (L)
Other packingmat.	Sillicon, Kalrez, Supagraf Premier, EPDM, Elast-o-lion			
<b>Special alloys</b>	<b>Alloy 400</b>	<b>Alloy C-276</b>	<b>TITAN</b>	<b>DUPLEX 1.4462</b>
Model	xxx-02	xxx-03	xxx-04	xxx-20
Stem packing	PTFE	PTFE	PTFE	VITON O-ring
	<b>Alloy 825</b>	<b>Alloy 625</b>	<b>Alloy 254Smo (6M0)</b>	
Model	xxx-12 (825)	xxx-12	xxx-11	Other on request
Stem packing	PTFE	PTFE	PTFE	
<b>Optional</b>				
Oxygen cleaned				xxx-xx/C
G-threaded connections				xxx/B-xx
All connections G-threaded 1/4				xxx/B14-xx
MonelK500 (NACE compliance)				xxx-xx5
Vent 1/2"NPT F (standard is 1/4"Npt F)				xxx/V12-xx
10.000 psi solution				xxx/10K-xx
Stem material Monel K500 (NACE MR-01-75 compliant)				xxx-xx5
Mounting bracket				904, 906 or 906/P

# Model 512



**512-06**

