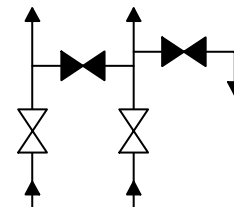
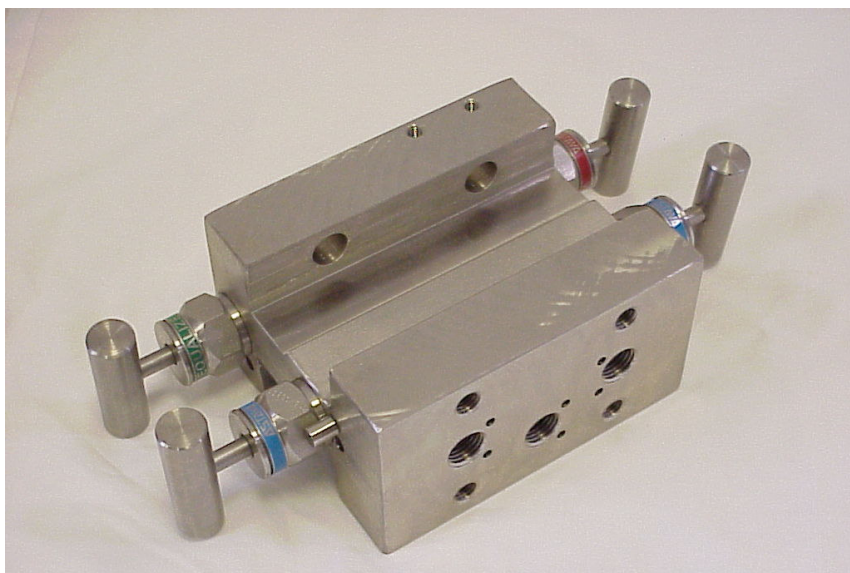




# Model 472



## 472-06

**4-VALVE MANIFOLD FOR DIRECT MOUNTING ON DIFFERENTIAL PRESSURE TRANSMITTER HAVING 54 MM CENTRES**

| <b>Standard materials</b> |  |
|---------------------------|--|
| Body, Bonnet, Plug        | AISI 316 L   |
| Needle point              | Rotating ceramic ball Al <sub>2</sub> O <sub>3</sub> |
| Stem                      | AISI 316 Ti with chromium-carbide diffusion coating  |

| <b>Connections</b> |               |           |
|--------------------|---------------|-----------|
| Process            | 2 x G 1/4 (F) | ISO 228/1 |
| Instrument         | Flanged       | DIN 19213 |
| Vent / Purge       | G 1/4 (F)     | ISO 228/1 |

| <b>Instrument mounting material</b> |          |
|-------------------------------------|----------|
| 2 Gaskets                           | PTFE     |
| 4 Bolts 7/16" UNF                   | AISI 316 |

| <b>Stem packing</b>                            | PTFE  | GRAFOIL nuclear quality   | VITON O-ring  |  |
|--|---|---|---|--|
| <i>Model</i>                                   | 472-01  | 472-05  | 472-06  |  |
| <i>Operating pressure / temperature rating</i> | 413 barg 38 °C<br>6000 psig 100 °F<br>200 barg 230 °C<br>3000 psig 472 °F | 413 barg 38 °C<br>6000 psig 100 °F<br>200 barg 400 °C<br>3000 psig 750 °F | 600 barg 38 °C<br>9000 psig 100 °F<br>200 barg 200 °C<br>3000 psig 400 °F |  |

| <b>Optional</b>                          |             |
|--|-------------|
| Oxygen cleaned                           | 472-xx/C    |
| 3/8" O.D. Swagelok® compression fitting  | 472-xx/SL38 |
| 10 mm O.D. Swagelok® compression fitting | 472-xx/SL10 |
| 3/8" O.D. Gyrolok® compression fitting   | 472-xx/GY38 |
| 10 mm O.D. Gyrolok® compression fitting  | 472-xx/GY10 |

| <b>Extra's</b>          |  | <i>Model</i>                         |
|-------------------------|--|--------------------------------------|
| Anti tamper key         |  | 59.003                               |
| Mounting plate assembly |  | 77.100 or 77.200<br>77.300 or 77.400 |

® Trademark Hoke Corporation

# Model 472

