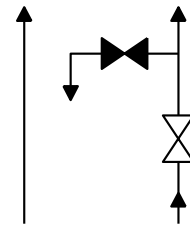
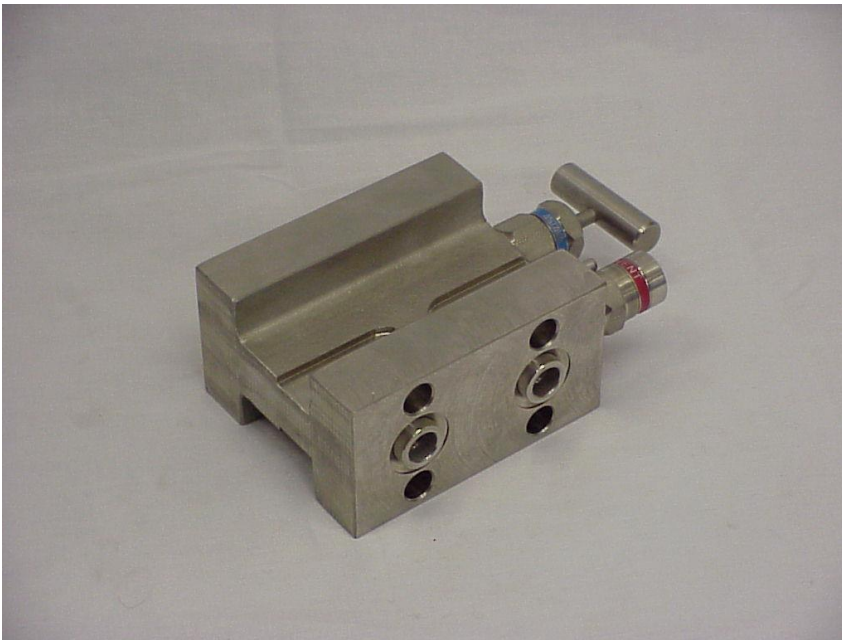




# Model 278



## 278-06

**2-VALVE MANIFOLD FOR DIRECT MOUNTING ON DIFFERENTIAL PRESSURE TRANSMITTER HAVING 54 MM CENTRES**

<b>Standard materials</b>	
Body, Bonnet, plug	AISI 316 L
Needle point	Rotating ceramic ball Al <sub>2</sub> O <sub>3</sub>
Stem	AISI 316 Ti with chromium-carbide diffusion coating

<b>Connections</b>		
Process	2 x 1/4-18 NPT (F)	ANSI / ASME B1.20.1
Instrument	Flanged	IEC61518-A
Vent / Purge	1/4-18 NPT (F)	ANSI / ASME B1.20.1

<b>Instrument mounting material</b>	
2 Gaskets	PTFE
4 Bolts 7/16" UNF	AISI 316

<b>Stem packing</b>	PTFE	GRAFOIL nuclear quality	VITON O-ring	
<i>Model</i>	278-01	278-05	278-06	
<i>Operating pressure / temperature rating</i>	413 barg 38°C 6000 psig 100°F 200 barg 230°C 3000 psig 450°F	413 barg 38°C 6000 psig 100°F 200 barg 400°C 3000 psig 750°F	600 barg 38°C 9000 psig 100°F 200 barg 200°C 3000 psig 400°F	

<b>Optional</b>	
Oxygen cleaned	278-xx/C
3/8" O.D. Swagelok® compression fitting	278-xx/SL38
10 mm O.D. Swagelok® compression fitting	278-xx/SL10
3/8" O.D. Gyrolok® compression fitting	278-xx/GY38
10 mm O.D. Gyrolok® compression fitting	278-xx/GY10

<b>Extra's</b>	<i>Model</i>
Anti tamper key	59.003
Mounting plate assembly	77.100 or 77.200 77.300 or 77.400

® Trademark Swagelok Corporation

® Trademark Hoke Corporation

# Model 278

