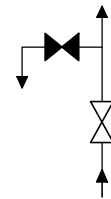
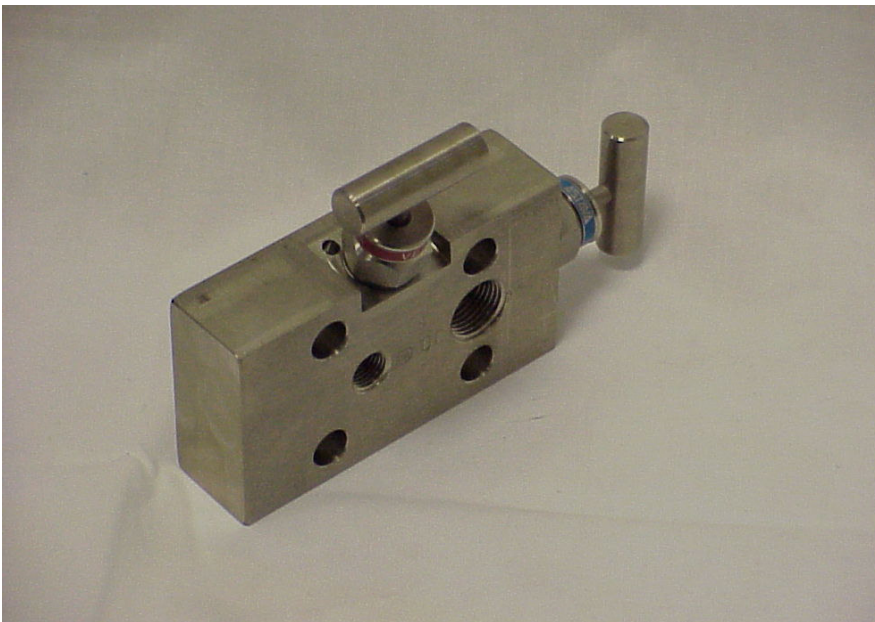




Model 228



PICTURE MODEL 228-06
2-VALVE MANIFOLD FOR DIRECT MOUNTING ON PRESSURE TRANSMITTER

Standard materials				
Body, Bonnet	AISI 316 L			
Needle point	Rotating ceramic ball Al ₂ O ₃			
Stem	AISI 316 Ti with chromium-carbide diffusion coating			
Connections				
Process	1/2-14 NPT (F) ANSI / ASME B1.20.1			
Instrument	Flanged DIN 19213			
Vent / Purge	1/4-18 NPT (F) ANSI / ASME B1.20.1			
Instrument mounting material				
2 Gaskets	PTFE			
4 Bolts 7/16" UNF	AISI 316			
Stem packing	Code	P/T	Material	
Teflon (PTFE)	xxx-01	413 barg 38 °C 200 barg 230 °C 6000 psig 100 °F 3000 psig 450 °F	AISI 316 (L)	
VITON	xxx-06	600 barg 38 °C 200 barg 200 °C 9000 psig 100 °F 3000 psig 400 °F	AISI 316 (L)	
Grafoil	xxx-05	413 barg 38 °C 200 barg 230 °C 6000 psig 100 °F 3000 psig 450 °F	AISI 316 (L)	
Other packingmat.	Sillicon, Kalrez, Supagraf Premier, EPDM, Elast-o-lion			
Optional				
Oxygen cleaned	xxx-xx/C			
G-threaded connections	xxx/B -xx			
All connections G-threaded 1/4	xxx/B14-xx			
MonelK500 (NACE compliance)	xxx-xx5			
Vent 1/2"NPT F (standard is 1/4"Npt F)	xxx/V12-xx			
10.000 psi solution	xxx/10K-xx			
Stem material Monel K500 (NACE MR-01-75 compliant)	xxx-xx5			
Bolt hole distance increased to 56 mm	xxx-xx/CC56			
Bolt hole distance increased to 58 mm	xxx-xx/CC58			
Mounting bracket	904, 906 or 906/P			
Special alloys	Alloy 400	Alloy C-276	TITAN	DUPLEX 1.4462
Model	xxx-02	xxx-03	xxx-04	xxx-20
Stem packing	PTFE	PTFE	PTFE	VITON O-ring
	Alloy 825	Alloy 625	Alloy 254Smo (6M0)	
Model	xxx-12 (825)	xxx-12	xxx-11	Other on request
Stem packing	PTFE	PTFE	PTFE	

Model 228

