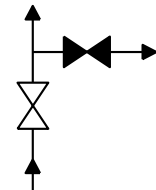
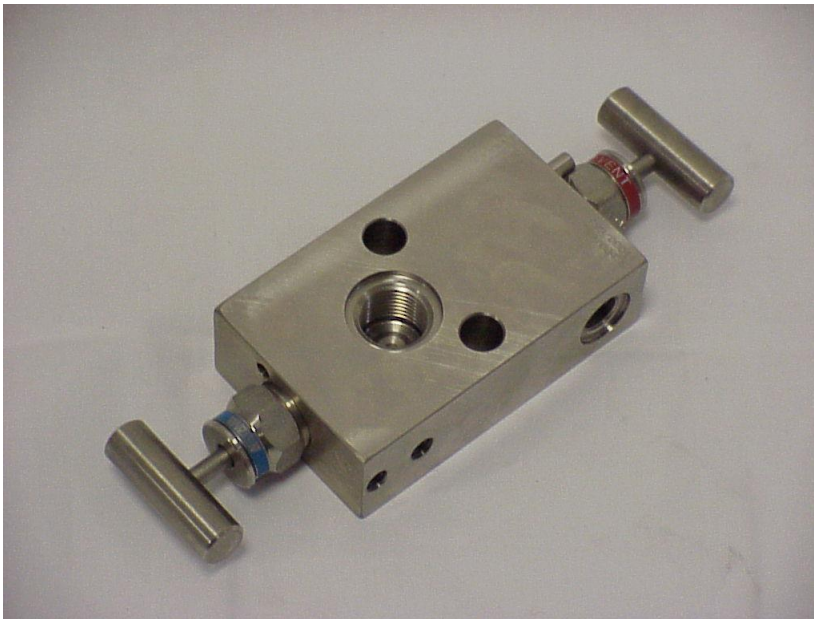




# Model 213/B



## 213/B-06

2-VALVE MANIFOLD FOR DIRECT MOUNTING ON PRESSURE TRANSMITTER

<b>Standard materials</b>	
Body, Bonnet	AISI 316 L
Needle point	Rotating ceramic ball Al <sub>2</sub> O <sub>3</sub>
Stem	AISI 316 Ti with chromium-carbide diffusion coating

<b>Connections</b>		
Process	G 1/2 (F)	ISO 228/1
Instrument	Flanged	IEC61518-A
Vent / Purge	G 1/4 (F)	ISO 228/1

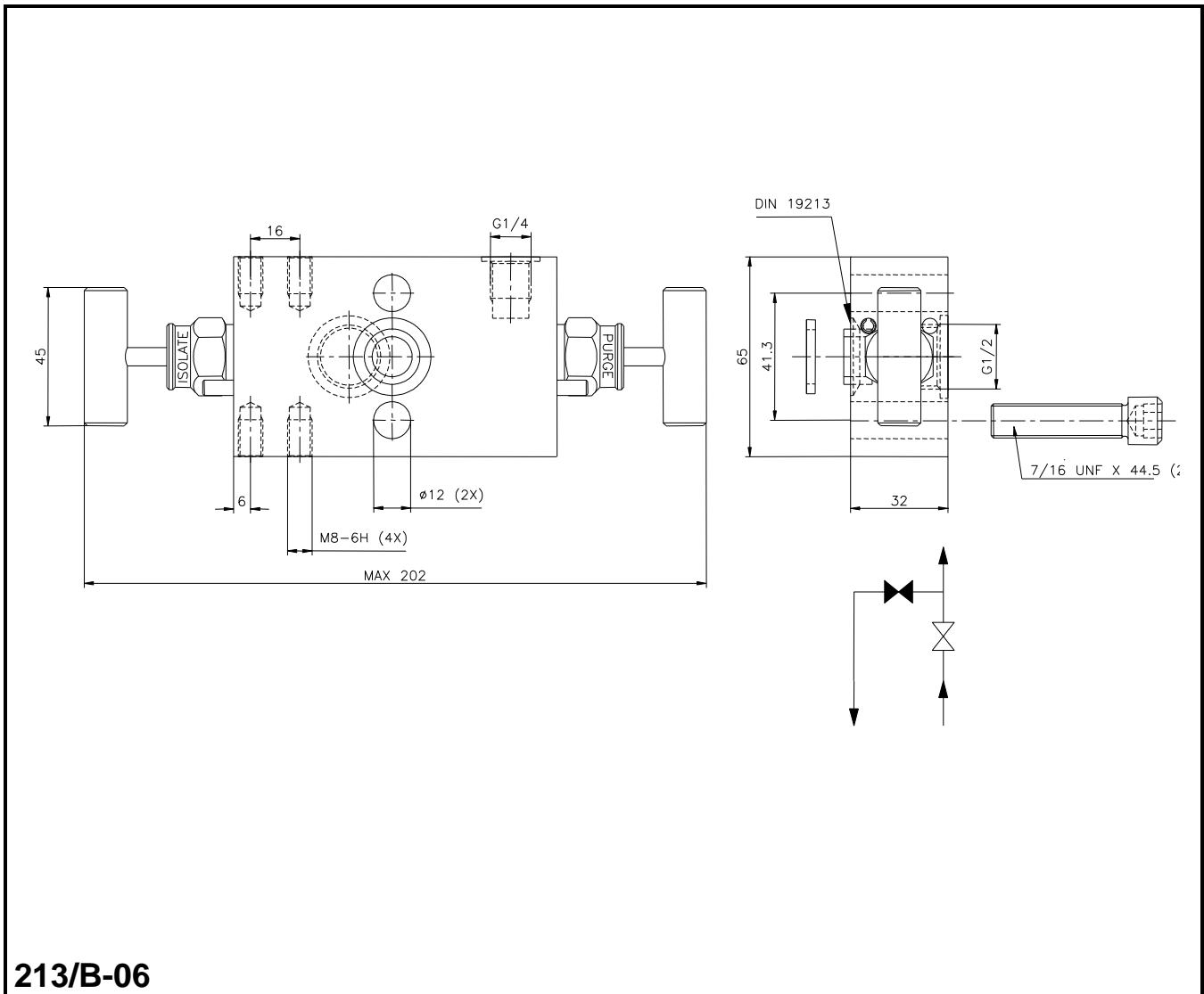
<b>Instrument mounting material</b>	
1 Gasket	PTFE
2 Bolts 7/16" UNF	AISI 316

<b>Stem packing</b>	PTFE	GRAFOIL nuclear quality	VITON O-ring	
<i>Model</i>	213/B-01	213/B-05	213/B-06	
<i>Operating pressure / temperature rating</i>	413 barg 38°C 6000 psig 100°F 200 barg 230°C 3000 psig 450°F	413 barg 38°C 6000 psig 100°F 200 barg 400°C 3000 psig 750°F	413 barg 38°C 6000 psig 100°F 200 barg 200°C 3000 psig 400°F	

<b>Optional</b>	
Oxygen cleaned	213/B-xx/C

<b>Extra's</b>	
Mounting bracket	<i>Model</i> 904, 906 or 906/P

# Model 213/B



**213/B-06**

