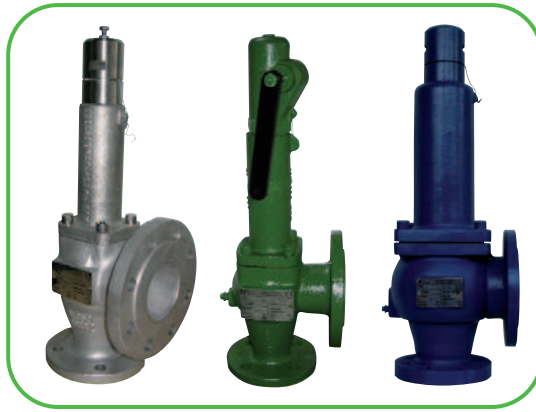


ISO 4126



Type 100/200



MATERIAL	ND	PN	SET PRESSURE	CLASS	SET PRESSURE
CAST IRON	ND20 to ND80	PN16	0,25 to 16 bar		
	ND100	PN16	0,25 to 15 bar		
	ND125	PN16	0,25 to 9 bar		
	ND150	PN16	0,25 to 8 bar		
CARBON STEEL	ND20 à ND50	PN40	0,25 to 40 bar	150 300	0,25 to 20 bar 0,25 to 50 bar
	ND65	PN16	0,25 to 16 bar		
	ND80 à ND100	PN40	0,25 to 40 bar		
		PN16	0,25 to 16 bar	150 300	0,25 to 20 bar 0,25 to 25 bar
	ND125	PN40	0,25 to 25 bar		
		PN16	0,25 to 16 bar	150 300	0,25 to 10 bar 0,25 to 10 bar
	ND150	PN40	0,25 to 16 bar		
		PN16	0,25 to 10 bar	150 300	0,25 to 10 bar 0,25 to 10 bar
STAINLESS STEEL	ND20 à ND50	PN40	0,25 to 39 bar	150 300	0,25 to 18 bar 0,25 to 49 bar
	ND65	PN16	0,25 to 15 bar		
		PN40	0,25 to 39 bar		
	ND80	PN16	0,25 to 15 bar	150 300	0,25 to 18 bar 0,25 to 40 bar
		PN40	0,25 to 39 bar		
	ND100	PN16	0,25 to 15 bar	150 300	0,25 to 18 bar 0,25 to 25 bar
	PN40	0,25 to 25 bar			

TYPE 110-130
TIGHT PLUG WITHOUT LEVER

TYPE 120-140
TIGHT PLUG WITH LEVER

TYPE 200
COUNTERWEIGHT

Connection

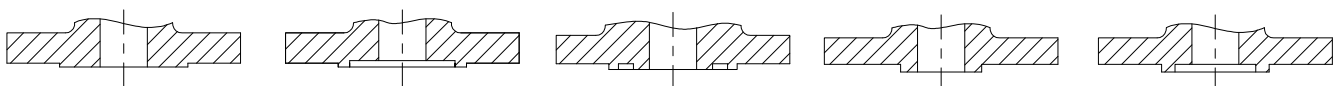
RAISED FACE CLASS 150/300
PN 16/40

MALE FEMALE FACING

TONGUE GROOVE FACING

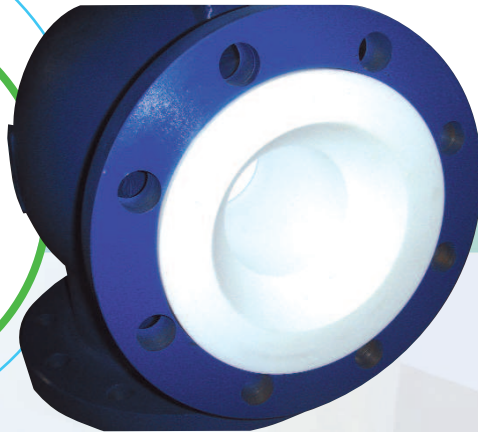
MALE FEMALE FACING

TONGUE GROOVE FACING



Special design

**PTFE
INTERNAL
PARTS**



EDF NUCLEAR



**EPOXY
PAINTING**

**WITH
PROXIMITY
DETECTOR**

Order information

MODEL	PLUG	SEAT/NOZZLE	MATIERE	CONNECTION	OPTIONS	PN 16/40	DN Cl 150/300
1	1 TIGHT WITHOUT LEVER	0 SEAT	A - STEEL	R - PN 40	DISC JEP : O'RING EPDM JT : O'RING - FPM ON MODELS AR-IR - EPDM ON MODEL FR JK : O'RING KALREZ® T : PTFE	DN 20	04 (3/4")
	2 TIGHT WITH LEVER					DN 25	10 (1")
	1 TIGHT WITHOUT LEVER		DN 32	11 (1.1/4")			
	2 TIGHT WITH LEVER		DN 40	13 (1.1/2")			
	1 TIGHT WITHOUT LEVER	1 FULL NOZZLE	I- STAINLESS STEEL	1 - CLASS 150	TIGHTNESS [ST : STELLITED SEAT PHC : HASTELLOY C2000® SEAT	DN 50	20 (2")
	2 TIGHT WITH LEVER			2 - PN 16		DN 65	23 (2.1/2")
1 TIGHT WITHOUT LEVER	3 - CLASS 300			I : STAINLESS STEEL INTERNAL FT : THERMAL FLUID HT : HIGH TEMPERATURE CS : SPECIALS SPRING PLATE VB : BLOCKING SCREW		DN 80	30 (3")
2 TIGHT WITH LEVER		DN 100	40 (4")				
						DN 125	50 (5")
						DN 150	60 (60")