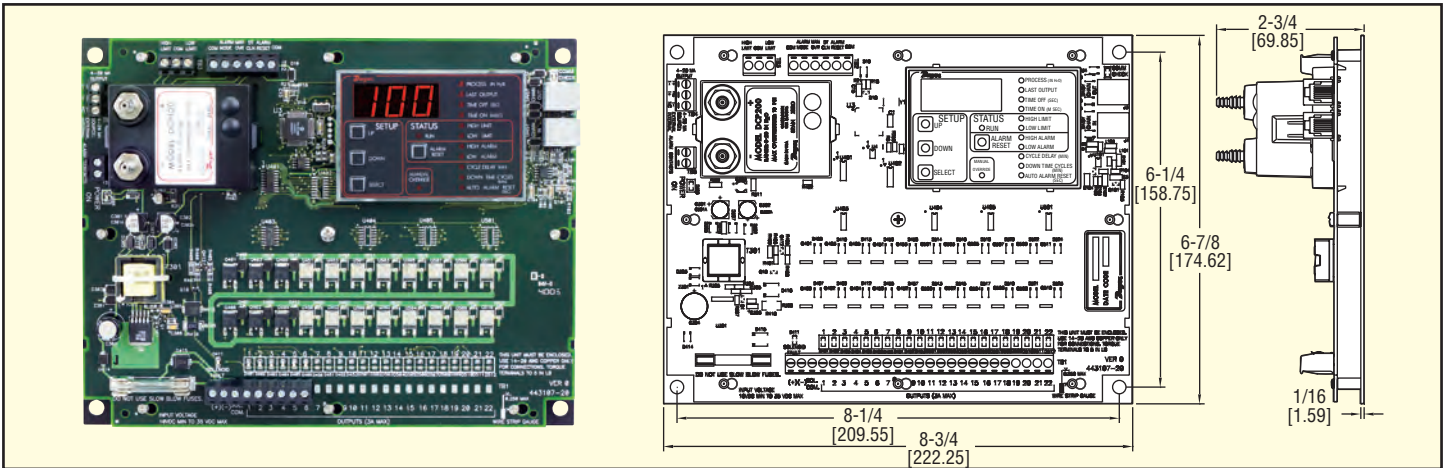




Series
DCT1000DC

Dust Collector Timer Controller

For Low Voltage Applications



Simplify your on-demand cleaning requirements with the Series DCT1000DC Dust Collector Timer Controller. Relying on one timer board for on demand and continuous cleaning applications, the DCT1000DC eliminates external devices such as pressure switches, relays and timers. The DCT1000DC accepts 10-30 VDC power. The units modular design allows for use as a continuous cleaning control or on-demand cleaning control using the optional DCP plug-in pressure module. A 4-20 mA process output is integral to the DCP pressure module, eliminating the need to purchase an expensive process transmitter. A solenoid fault light on the DCT1000DC notifies the operator when a solenoid valve fails to activate properly. The DCT1000DC is the same size for 6, 10 and 22 channels. One board size allows the standardization on one enclosure. For larger installations the DCT1000DC may be expanded by connecting multiple boards in series with the DCA cable.

SPECIFICATIONS
DCT1000DC Timer Controller:
Output Channels: 6, 10, & 22 channels.
Power Requirements: 10 - 30 VDC.
Solenoid Supply: 3A maximum per channel.
Fuse: 3A @ 250 VAC.
Temperature Limits: -40 to 140°F (-40 to 60°C).
Storage Temperature Limits: -40 to 176°F (-40 to 80°C).
On Time: 10 msec to 600 msec, 10 msec steps.
On Time Accuracy: ±10 msec.
Off Time: 1 second to 255 seconds, 1 second steps.
Off Time Accuracy: ±1% of the value or ±50 msec, whichever is greater.
Weight: 1 lb 3.0 oz (538.6 g).

DCP Pressure Module:
Pressure Ranges: 10" w.c. or 20" w.c.
Temperature Limits: -40 to 140°F (-40 to 60°C).
Pressure Limit: 10 psi (68.95 kPa).
Pressure Limit (differential): 10 psi (68.95 kPa).
Accuracy: ±1.5% F.S. @ 73°F (22.8°C).
Output Signal: 4-20 mA.
Alarm Contacts: 1.5A inductive load, 3A resistive load @ 30 VAC or 40 VDC.
Process Connections: Two barbed connections for use with 1/8" (3.18 mm) or 3/16" (4.76 mm) I.D. tubing.
Weight: 5.5 oz (155.9 g).
Agency Approvals: CE.

OPTIONS

- WP – Weatherproof Housing Only
 - WPP – Weatherproof Housing with Pressure Ports
 - WPPS – Weatherproof Housing with Pressure Ports, Three Position Rotary Switch Installed
 - EXPL – Explosion-proof Housing
- Multiple Boards**, stacked in enclosure

ACCESSORIES

- DCA, Channel expander cable available in 1 ft., 2 ft., and 4 ft. lengths
- DPMA-402, Process Indicator



DCT in optional NEMA 4/4X weatherproof enclosure.



DCT in optional Explosion proof Enclosure.



Model DCAC02 Cable Connection: For connecting multiple boards.



DCT expanded with multiple boards.



Model	Description	No. of Channels	D.P. Range
DCT1022DC	Master Controller	22	
DCT1010DC	Master Controller	10	
DCT1006DC	Master Controller	6	
DCP200A	Pressure Module		20 in w.c.
DCP100A	Pressure Module		10 in w.c.