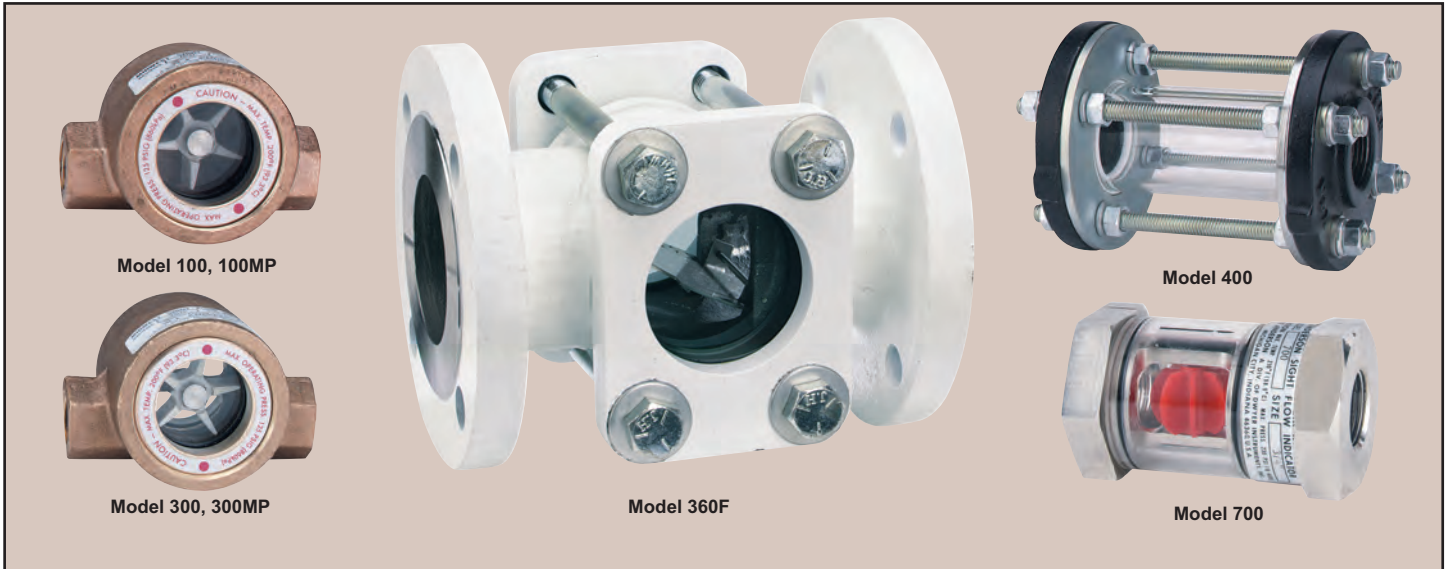




Series  
SFI-100, SFI-300,  
SFI-350, SFI-360,  
SFI-400, SFI-700

# MIDWEST Sight Flow Indicators

Inexpensive Protection for Expensive Equipment and Systems



FLOW

Sight Flow Indicators

Midwest Sight Flow Indicators are manufactured of quality materials and safety tested to assure long, dependable service at economical prices. Available in window viewing style in the 100 and 300 Series and tube viewing style in the 400 and 700 Series with connection choices of female NPT, BSPP, or BSPT threaded and flanged. Series 700 has impeller and internal wipers for cleaning sight tube, which is perfect for fluids with suspended solids. Just rotate the glass tube and restore full 360° visibility without disrupting the flow.

#### Models

- 100 - Single window with impeller
- 300 - Double window with impeller
- 350 - Double window with no indicator
- 360 - Double window with flapper
- 400 - Tube type with no indicator
- 700 - Tube type with impeller and internal wipers to clean glass tube

#### Sight Flow Indicator Dimensions and Weight

Model	Body Size	Length	Depth	Height	Flange Diameter	Viewing Area Diameter	Weight lb (kg)
<b>100 Series</b>	1/4, 3/8	3.000 (76)	1.813 (46)	2.125 (54)	-	-	1.1 (0.5)
	1/2, 3/4	4.000 (102)	2.250 (57)	2.563 (65)	-	-	1.5 (0.7)
	1, 1-1/4	4.375 (111)	2.563 (65)	2.625 (67)	-	-	2.7 (1.2)
	1-1/2, 2	5.688 (144)	3.250 (83)	3.625 (83)	-	-	5.5 (2.5)
<b>300 Series</b>	1/4, 3/8	3.063 (78)	2.250 (57)	2.125 (54)	-	-	1.7 (0.8)
	1/2, 3/4	4.063 (103)	2.750 (70)	2.563 (65)	-	-	2.6 (1.2)
	1, 1-1/4	4.375 (111)	3.125 (79)	2.563 (65)	-	-	3.0 (1.4)
	1-1/2, 2	5.500 (140)	3.688 (93)	4.063 (103)	-	-	7.0 (3.2)
<b>700 Series</b>	1/4, 3/8	2.750 (70)	-	1.500 (38)	-	-	0.9 (0.4)
	1/2, 3/4	3.688 (94)	-	2.250 (57)	-	-	2.4 (1.1)
	1, 1-1/4	4.875 (124)	-	2.750 (70)	-	-	5.1 (2.3)
	1-1/2	-	-	(across flats)	-	-	-
<b>400 Series</b>	1/2	4.500 (144)	-	-	3.500 (89)	1.500 (38)	3.8 (1.7)
	3/4	5.125 (130)	-	-	3.875 (98)	1.750 (44)	4.8 (2.2)
	1	5.625 (143)	-	-	4.250 (108)	2.000 (51)	6.2 (2.8)
	1-1/4	5.750 (146)	-	-	4.625 (117)	2.000 (51)	7.6 (3.5)
	1-1/2	5.875 (149)	-	-	5.000 (127)	2.500 (64)	8.7 (4.0)
	2	6.125 (156)	-	-	6.000 (152)	3.000 (76)	13 (6.0)
	3	6.250 (159)	-	-	7.500 (191)	4.000 (102)	17 (7.7)
4	6.250 (159)	-	-	9.000 (229)	5.000 (127)	25 (11.0)	
<b>400F Series</b>	1	5.000 (127)	-	-	4.250 (108)	2.000 (51)	7 (3.2)
	1-1/4	5.125 (130)	-	-	4.625 (117)	2.000 (51)	8 (3.6)
	1-1/2	5.250 (133)	-	-	5.000 (127)	2.500 (64)	12 (5.5)
	2	5.370 (137)	-	-	6.000 (152)	3.000 (76)	14 (6.4)
	3	5.750 (146)	-	-	7.500 (191)	4.000 (102)	23 (10.4)
4	5.750 (146)	-	-	9.000 (229)	5.000 (127)	31 (14.1)	
<b>300F Series</b>	1-1/2	6.375 (162)	-	-	5.000 (127)	2.313 (58)	12 (5.5)
	2	6.500 (165)	-	-	6.000 (152)	2.313 (58)	16 (7.5)
	3	8.875 (225)	-	-	7.500 (191)	3.000 (76)	38 (17)
	4	10.250 (260)	-	-	9.000 (229)	4.000 (102)	56 (25)
	6	12.500 (318)	-	-	11.000 (279)	6.000 (152)	120 (55)

Dimensions are in inches (mm)

**SFI-100 & SFI-300 SERIES**

**Window Style with Threaded Connections**

**SPECIFICATIONS**

**Service:** Compatible gases and liquids.

**Wetted Materials:** Window: Tempered glass; Body: Bronze or 316 SS; Gasket: Buna-N, fluoroelastomer or PTFE; Indicator: ABS or 316 SS impeller (100 and 300), 304 SS or 316 SS flapper (360).

**Temperature Limit:** 200°F (93°C).

**Pressure Limit:** 125 psig (8.62 bar), 150 psig (10.34 bar) on "MP" models.

**Connections:** Threaded.

Example	SFI	300	SS	2	G2	SFI-300SS-2-G2 Sight Flow Indicator; double window, temper glass, Fluoroelastomer gaskets, 316SS body, ABS impeller, 2 inch female NPT connections.
Model Designator	SFI					Sight flow indicator, tempered glass standard, Buna-N gaskets standard, female NPT connections standard.
Body Style		100 300 350 360				Single window, bronze body, ABS Impeller Double window, bronze body, ABS Impeller Double window, bronze body, no moving indicator Double window, bronze body, 304SS flapper
Body Options			SS MP			316SS body option for 300, 350, 360 150 psig maximum pressure option, includes Fluoroelastomer gaskets
Body Size				1/4 3/8 1/2 3/4 1 1-1/4 1-1/2 2		1/4 inch connection size 3/8 inch connection size 1/2 inch connection size 3/4 inch connection size 1 inch connection size 1-1/4 inch connection size 1-1/2 inch connection size 2 inch connection size
Options					W2 G1 G2 S2 S3 I1 I2 I3 F1 BSPT BSPP	Plexiglass window PTFE gasket Fluoroelastomer gasket 316SS Shaft (Not on 350 Model) Monel Shaft (Not on 350 Model) ABS impeller with bronze bushing (Not on 350, 360) 316SS impeller (Not on 350, 360) No impeller (100 only) 316SS Flapper (360 only) BSPT threads BSPP threads

(Maximum flow on impeller models: 5 FPS with liquids, 5000 FPM with gases)

**SFI-300F SERIES**

**Window Style with Flanged Connections**

**SPECIFICATIONS**

**Service:** Compatible gases and liquids.

**Wetted Materials:** Window: Tempered glass; Body: Carbon steel or 316 SS; Gasket: Buna-N, fluoroelastomer or PTFE; Indicator: 316 SS flapper (360).

**Temperature Limit:** 200°F (93°C).

**Pressure Limit:** 150 psig (10.34 bar).

**Connections:** Flanged.

Example	SFI	360FSS	1-1/2	G1	SFI-360FSS-1-1/2-G1 Sight Flow Indicator; double window, tempered glass, PTFE gasket, 316SS body, 304SS flapper, 1-1/2 inch raised face flange connections
Model Designator	SFI				Sight flow indicator, double window, tempered glass, Buna-N gaskets standard, raised face flange connections
Body Style		350FCS 350FSS 360FCS 360FSS			Carbon steel body, no moving indicator 316SS body, no moving 316SS indicator Carbon steel body, 316SS flapper 316SS body, 316SS flapper
Body Size			1-1/2 2 3 4 6		1-1/2 inch raised face flange connection size 2 inch raised face flange connection size 3 inch raised face flange connection size 4 inch raised face flange connection size 6 inch raised face flange connection size
Options				G1 G2	PTFE gasket Fluoroelastomer gasket

**SFI-700 SERIES**

**Tube Style with Threaded Connections**

**SPECIFICATIONS**

**Service:** Compatible gases and liquids.

**Wetted Materials:** Tube: Tempered borosilicate; Body: Brass or 316 SS; Gasket: Fluoroelastomer; Indicator: Acetal.

**Temperature Limit:** 212°F (100°C).

**Pressure Limit:** 230 psig (15.86 bar).

**Connections:** Threaded.

Example	SFI	700SS	1-1/2	SFI-700SS-1-1/2 Sight Flow Indicator; tube type with 8 blade Acetal impeller and integral wipers to clean tube interior, tempered borosilicate tube, Fluoroelastomer gaskets, 316SS body, 1-1/2 inch female NPT connections
Model Designator	SFI			Sight flow indicator, tube type with 8 blade Acetal impeller and integral wipers to clean tube interior, tempered borosilicate tube, Fluoroelastomer gaskets
Body Style		700 700SS		Brass body 316SS body
Body Size			1/4 3/8 1/2 3/4 1 1-1/4 1-1/2	1/4 inch female NPT connection size 3/8 inch female NPT connection size 1/2 inch female NPT connection size 3/4 inch female NPT connection size 1 inch female NPT connection size 1-1/4 inch female NPT connection size 1-1/2 inch female NPT connection size
Options				BSPT BSPT threads BSPP BSPP threads

**SFI-400 SERIES**

**Tube Style with Threaded or Flanged Connections**

**SPECIFICATIONS**

**Service:** Compatible gases and liquids.

**Wetted Materials:** Tube: Borosilicate; Body: Cast iron or 316 SS; Gasket: PTFE.

**Temperature Limit:** 200°F (93°C).

**Pressure Limit:** 50 psig (3.45 bar).

**Connections:** Threaded or flanged.

Example	SFI	400	1-1/2	SFI-400SS-1-1/2 Sight Flow Indicator; tube type, borosilicate tube, PTFE gaskets, 316SS body, 1-1/2 inch female NPT connections
Model Designator	SFI			Sight flow indicator, tube type, borosilicate tube, PTFE gaskets
Body Style		400CI 400SS 400F		Female NPT connections, cast iron body (only for 1 through 2 inch sizes) Female NPT connections, 316SS body Raised face flange connection, 316SS body (only for 1 inch and up sizes)
Body Size			1/2 3/4 1 1-1/4 1-1/2 2 3 4	1/2 inch connection size 3/4 inch connection size 1 inch connection size 1-1/4 inch connection size 1-1/2 inch connection size 2 inch connection size 3 inch connection size 4 inch connection size

(Best for use in vertical pipelines where there are no mechanical strains)

FLOW  
Sight Flow Indicators