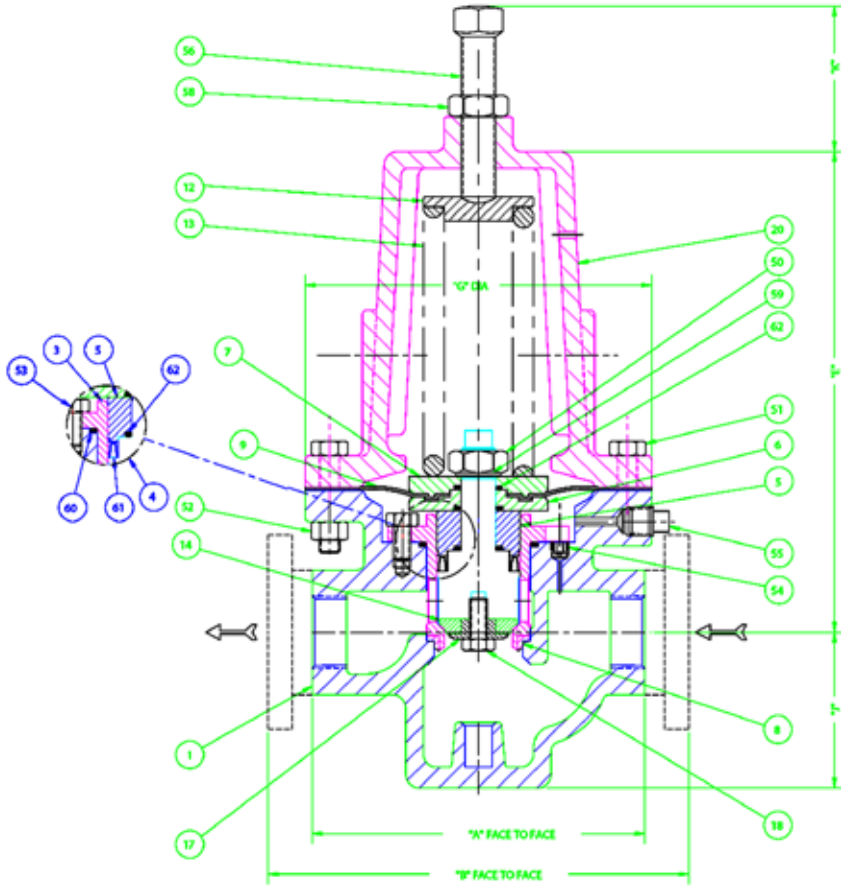
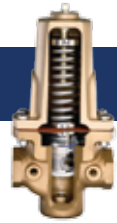


BS Series 5



About This Valve

Replacing trim with back pressure trim produces simplest back pressure regulator

- Pump discharge applications
- Filter applications
- Relief valve

| Item No. | QTY REQ | Description |
|----------|---------|-----------------------|
| 62 | 3 | Stem Seal |
| 61 | 1 | Piston Seal |
| 60 | 1 | Cylinder Seal |
| 59 | 1 | Belleville Washer |
| 58 | 1 | Lock Nut |
| 56 | 1 | Adjusting Screw |
| 55 | 1 | Pipe Plug |
| 54 | 1 | Internal Plug |
| 53 | 3 | Cylinder Bolt |
| 52 | 8 | Body Nut |
| 51 | 8 | Body Bolt |
| 50 | 1 | Stem Nut |
| 20 | 1 | Chamber |
| 19 | 1 | Disc Nut (2", 3", 4") |

| Item No. | QTY REQ | Description |
|----------|---------|-------------------------|
| 18 | 1 | Disc Screw (1", 1 1/2") |
| 17 | 1 | Disc Washer |
| 14 | 1 | Disc |
| 13 | 1 | Adjusting Spring |
| 12 | 1 | Spring Pusher |
| 9 | 2 | Membrane |
| 8 | 1 | Seat |
| 7 | 1 | Upper Membrane Plate |
| 6 | 1 | Lower Membrane Plate |
| 5 | 1 | Piston |
| 4 | 1 | Stem |
| 3 | 1 | Cylinder |
| 1 | 1 | Body |

Cv Table*

| Size | 1/2" | 3/4" | 1" | 1.5" | 2" | 3" | 4" |
|-------------------------------|------|------|----|------|----|-----|-----|
| PRV with elastomeric membrane | 4.0 | 8.0 | 12 | 24 | 48 | 120 | 175 |

Dimensions

Dimensions are subject to change. Contact factory for certification

| Valve Size | "A" Screwed Ends | "B" Flanged Ends | | | | | | | | "E" Dim. | "G" Dim. | "J" Dim. |
|------------|------------------|------------------|----------------|-------------|----------------|----------------|-------------|----------------|-----------------|----------|----------|----------|
| | | 125# C.I./D.I. | 150# C.S./S.S. | 150# Bronze | 250# C.I./D.I. | 300# C.S./S.S. | 300# Bronze | 600# C.S./S.S. | 1500# C.S./S.S. | | | |
| 1/2" | 6" | | 8 3/8" | 9 5/8" | | 8 3/8" | 9 5/8" | | | 4 7/16" | 6 1/4" | 2 13/16" |
| 3/4" | 6" | | 8 3/8" | 9 5/8" | | 8 3/8" | 9 5/8" | | | 4 7/16" | 6 1/4" | 2 13/16" |
| 1" | 6" | | 8 3/8" | 9 5/8" | | 8 3/8" | 9 5/8" | | | 4 7/16" | 6 1/4" | 2 13/16" |
| 1 1/2" | 9 7/8" | | 12 1/2" | 11 1/2" | | 12 1/2" | 11 1/2" | 13 1/2" | | 5 1/2" | 7" | 3 3/4" |
| 2" | 9 7/8" | | 12 1/2" | 11 1/2" | | 12 1/2" | 11 1/2" | 13 1/2" | | 5 1/2" | 8" | 4" |
| 3" | | 12" | 12" | 12" | 12 1/2" | 12 1/2" | 12 1/2" | | | 9 5/32" | 10 3/4" | 5 5/16" |
| 4" | | 14" | 14" | 14" | 14 1/2" | 14 1/2" | 14 1/2" | | | 9 5/32" | 10 3/4" | 5 5/16" |

General Specifications:

Sizes: 1/2 in. through 4 in.

Body Materials: Cast Iron, Carbon Steel, Bronze, Stainless Steel, Hastelloy®, Alloy 20

Trim Materials: 17-4 PH or 316L S.S., Monel, Hastelloy®, Stellite, others

Diaphragm Materials: 6-ply special composition (Teflon-Viton-Teflon), Virgin Teflon, Viton, Neoprene, Buna N, EPR, Fluorosilicone, Beryllium Copper, Stainless Steel, others.

Seats: Extensive selection includes: Polyurethane, TFE, Viton, C-TFE (KEL-F), Reinforced TFE

Cv Rating: Controllable Cv Range, 4 to 220 (Elastomeric membrane)

Set Points: To Inches of Water Column

Max. Inlet Pressure: 3000 psig @100°F

Actuators: Piston Actuator

Temperature Limits: -425° to 600°F

End Connections: Threaded, Flanged, Socket Weld, Butt Weld, Tube, Tri-Clamp, DIN, BSP, Others

Cv Rangeability: 1000 : 1 (with polyurethane seat)

Sensitivity: 1/8 in. W.C.

Trim: Top Entry, Balanced, Quick-Change, Single Seat

Inlet Sensitivity Effect: Minimal due to balanced design. Outlet pressure changes by 3 to 8 psig for every 100 psig variation in inlet pressure, inversely.

Sensing: Internal or External

Ratio-Loaded Configuration: Available for controlling set point when control signal is too low.

*Contact factory for metal membrane or reduced Cv trim.