

BS Series 2

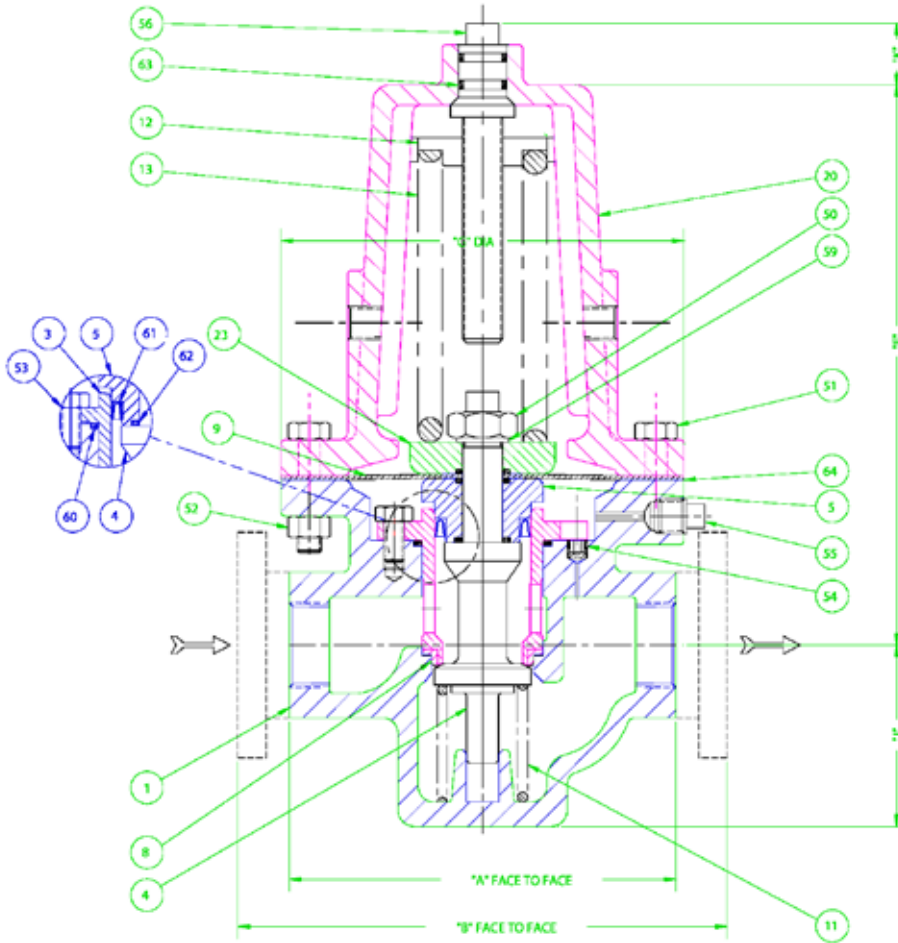


About This Valve

Using a sealed differential chamber instead of simple BS1 chamber produces a differential PRV

- Seal pressurization applications
- Spring atomization applications
- Spray tower applications

BS2-3: By placing spring in tension rather than compression produces a negative bias relative to the reference pressure or a negative differential regulator.



Item No.	QTY REQ	Description	Item No.	QTY REQ	Description
64	2	Teflon Gasket	20	1	Chamber
63	2	Adjusting Screw Seal	13	1	Adjusting Spring
62	3	Stem Seal	12	1	Spring Pusher
61	1	Piston Seal	9	2	Membrane
60	1	Cylinder Seal	8	1	Seat
59	1	Belleville Washer	7	1	Upper Membrane Plate
56	1	Adjusting Screw	6	1	Lower Membrane Plate
55	1	Pipe Plug	5	1	Piston
54	1	Internal Plug	4	1	Stem
53	3	Cylinder Bolt	3	1	Cylinder
52	8	Body Nut	1	1	Body
51	8	Body Bolt			
50	1	Stem Nut			

Cv Table*

Size	1/2"	3/4"	1"	1.5"	2"	3"	4"
PRV with elastomeric membrane	4.0	8.0	15.0	30.0	60	120	220

Dimensions Dimensions are subject to change. Contact factory for certification

Valve Size	"A" Screwed Ends	"B" Flanged Ends								"E" Dim.	"G" Dim.	"J" Dim.
		125# C.I./D.I.	150# C.S./S.S.	150# Bronze	250# C.I./D.I.	300# C.S./S.S.	300# Bronze	600# C.S./S.S.	1500# C.S./S.S.			
1/2"	6"		8 3/8"	9 5/8"		8 3/8"	9 5/8"			4 7/16"	6 1/4"	2 13/16"
3/4"	6"		8 3/8"	9 5/8"		8 3/8"	9 5/8"			4 7/16"	6 1/4"	2 13/16"
1"	6"		8 3/8"	9 5/8"		8 3/8"	9 5/8"			4 7/16"	6 1/4"	2 13/16"
1 1/2"	9 7/8"		12 1/2"	11 1/2"		12 1/2"	11 1/2"	13 1/2"		5 1/2"	7"	3 3/4"
2"	9 7/8"		12 1/2"	11 1/2"		12 1/2"	11 1/2"	13 1/2"		5 1/2"	8"	4"
3"		12"	12"	12"	12 1/2"	12 1/2"	12 1/2"			9 5/32"	10 3/4"	5 5/16"
4"		14"	14"	14"	14 1/2"	14 1/2"	14 1/2"			9 5/32"	10 3/4"	5 5/16"

General Specifications:

Sizes: 1/2 in. through 4 in.
Body Materials: Cast Iron, Carbon Steel, Bronze, Stainless Steel, Hastelloy®, Alloy 20
Trim Materials: 17-4 PH or 316L S.S., Monel, Hastelloy®, Stellite, others
Diaphragm Materials: 6-ply special composition (Teflon-Viton-Teflon), Virgin Teflon, Viton, Neoprene, Buna N, EPR, Fluorosilicone, Beryllium Copper, Stainless Steel, others.
Seats: Extensive selection includes: Polyurethane, Virgin TFE, Viton, C-TFE (KEL-F), Reinforced TFE
Cv Rating: Controllable Cv Range, 4 to 220 (Elastomeric membrane)
Set Points: To Inches of Water Column
Max. Inlet Pressure: 3000 psig @100°F
Actuators: Elastomeric Membrane, Metal Membrane

Temperature Limits: -425° to 600°F

End Connections: Threaded, Flanged, Socket Weld, Butt Weld, Tube, Tri-Clamp, DIN, BSP, Others

Cv Rangeability: 1000 : 1 (with polyurethane seat)

Sensitivity: 1/8 in. W.C.

Trim: Top Entry, Balanced, Quick-Change, Single Seat

Inlet Sensitivity Effect: Minimal due to balanced design.

Outlet pressure changes by 3 to 8 psig for every 100 psig variation in inlet pressure, inversely.

Sensing: Internal or external

Ratio-Loaded Configuration: Available for controlling set point when control signal is too low.

*Contact factory for metal membrane or reduced Cv trim.