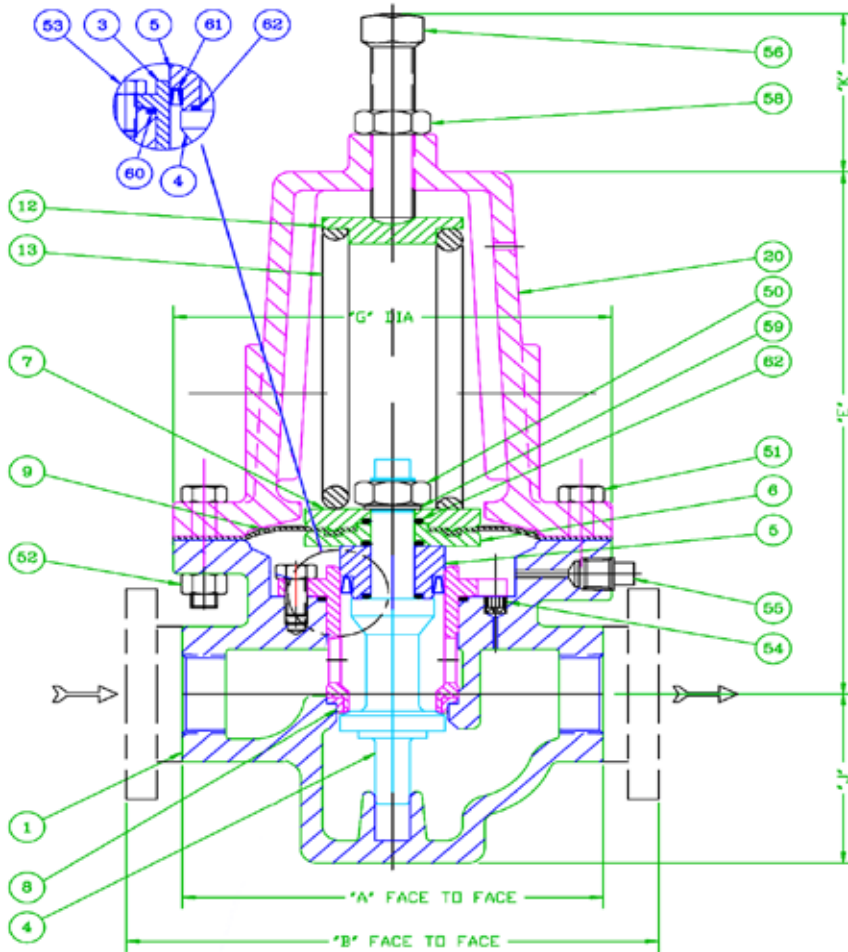


BS Series 1



About This Valve

Simplest regulator design

- Chemical and all simple process applications and industries.
- All fluids

Item Number	QTY REQ	Description
62	3	Stem Seal
61	1	Piston Seal
60	1	Cylinder Seal
59	1	Belleville Washer
58	1	Lock Nut
56	1	Adjusting Screw
55	1	Pipe Plug
54	1	Internal Plug
53	3	Cylinder Bolt
52	8	Body Nut
51	8	Body Bolt
50	1	Stem Nut
9	2	Membrane
8	1	Seat
7	1	Upper Membrane Plate
6	1	Lower Membrane Plate
5	1	Piston
4	1	Stem
3	1	Cylinder
1	1	Body

Cv Table*

Size	1/2"	3/4"	1"	1.5"	2"	3"	4"
PRV with elastomeric membrane	4.0	8.0	15.0	30.0	60	120	220

Dimensions Dimensions are subject to change. Contact factory for certification

Valve Size	"A" Screwed Ends	"B" Flanged Ends								"E" Dim.	"G" Dim.	"J" Dim.
		125# C.I./D.I.	150# C.S./S.S.	150# Bronze	250# C.I./D.I.	300# C.S./S.S.	300# Bronze	600# C.S./S.S.	1500# C.S./S.S.			
1/2"	6"		8 3/8"	9 5/8"		8 3/8"	9 5/8"			4 7/16"	6 1/4"	2 13/16"
3/4"	6"		8 3/8"	9 5/8"		8 3/8"	9 5/8"			4 7/16"	6 1/4"	2 13/16"
1"	6"		8 3/8"	9 5/8"		8 3/8"	9 5/8"			4 7/16"	6 1/4"	2 13/16"
1 1/2"	9 7/8"		12 1/2"	11 1/2"		12 1/2"	11 1/2"	13 1/2"		5 1/2"	7"	3 3/4"
2"	9 7/8"		12 1/2"	11 1/2"		12 1/2"	11 1/2"	13 1/2"		5 1/2"	8"	4"
3"		12"	12"	12"	12 1/2"	12 1/2"	12 1/2"			9 5/32"	10 3/4"	5 5/16"
4"		14"	14"	14"	14 1/2"	14 1/2"	14 1/2"			9 5/32"	10 3/4"	5 5/16"

General Specifications:

Sizes: 1/2 in. through 4 in.

Body Materials: Cast Iron, Carbon Steel, Bronze, Stainless Steel, Hastelloy®, Alloy 20

Trim Materials: 17-4 PH or 316L S.S., Monel, Hastelloy®, Stellite, others

Diaphragm Materials: 6-ply special composition (Teflon-Viton-Teflon), Virgin Teflon, Viton, Neoprene, Buna N, EPR, Fluorosilicone, Beryllium Copper, Stainless Steel, others.

Seats: Extensive selection includes: Polyurethane, Virgin TFE, Viton, C-TFE (KEL-F), Reinforced TFE

Cv Rating: Controllable Cv Range, 4 to 220 (Elastomeric membrane)

Set Points: To Inches of Water Column

Max. Inlet Pressure: 3000 psig @100°F

Actuators: Elastomeric Membrane, Metal Membrane

Temperature Limits: -425° to 600°F

End Connections: Threaded, Flanged, Socket Weld, Butt Weld, Tube, Tri-Clamp, DIN, BSP, Others

Cv Rangeability: 1000 : 1 (with polyurethane seat)

Sensitivity: 1/8 in. W.C.

Trim: Top Entry, Balanced, Quick-Change, Single Seat

Inlet Sensitivity Effect: Minimal due to balanced design.

Outlet pressure changes by 3 to 8 psig for every 100 psig variation in inlet pressure, inversely.

Sensing: Internal or external

Ratio-Loaded Configuration: Available for controlling set point when control signal is too low.

*Contact factory for metal membrane or reduced Cv trim.